



# GAT MONTHLY MEMBERSHIP PROGRESS REPORT

Results as of: 12/31/2023

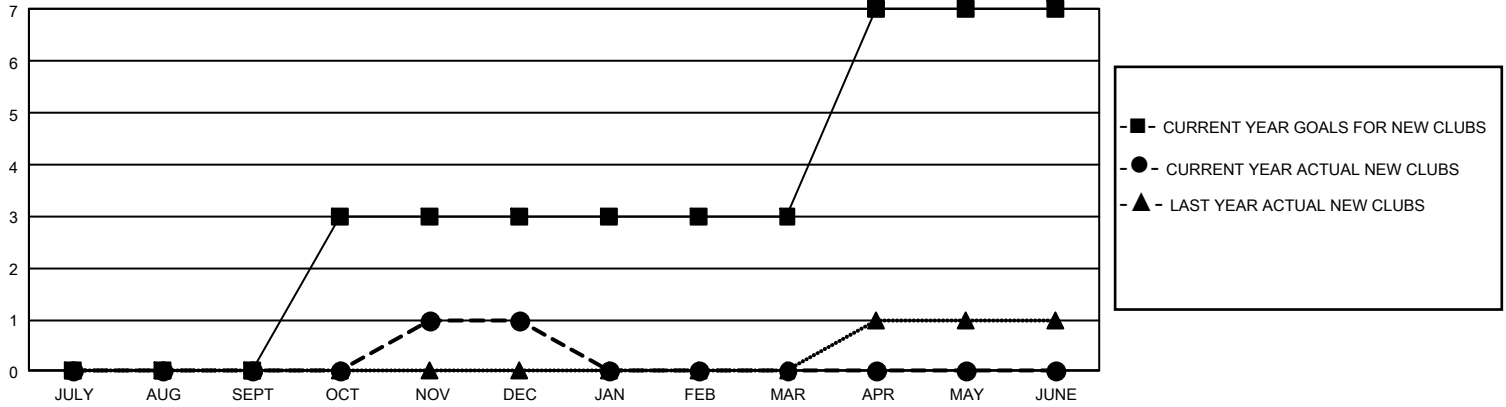
## GMT Constitutional Area 7, Group B

REPORT DOES NOT INCLUDE CLUBS IN UNDISTRICTED AREAS.

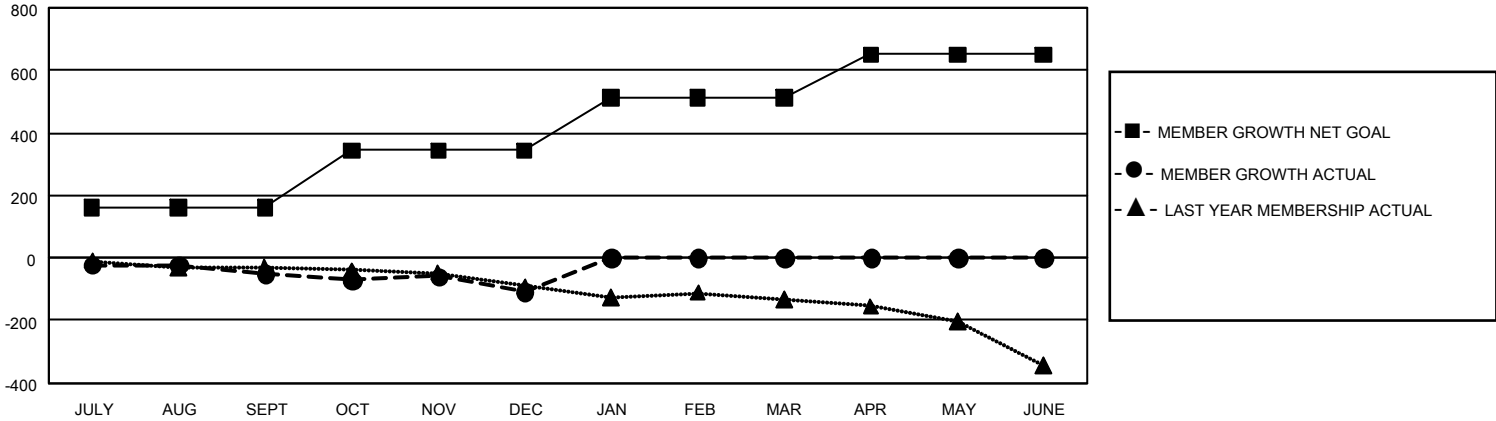
Clubs			
RESULTS FOR 2023-2024			
QUARTER	NEW CLUB GOAL	NEW CLUBS	DROPPED CLUBS
JULY/AUG/SEPT	0	0	3
OCT/NOV/DEC	9	1	2
JAN/FEB/MAR	0	0	0
APR/MAY/JUNE	12	0	0

Members			
RESULTS FOR 2023-2024			
QUARTER	MEMBER GROWTH NET GOAL	MEMBER GROWTH ACTUAL	DROPPED MEMBERS ACTUAL (including transfers)
JULY/AUG/SEPT	162	183	200
OCT/NOV/DEC	182	185	227
JAN/FEB/MAR	168	0	0
APR/MAY/JUNE	139	0	0

GOALS AND ACTUAL NEW CLUBS CUMULATIVE



GOALS AND ACTUAL MEMBERS CUMULATIVE



<b>DROPPED CLUBS: 5</b>  <b>DROPPED MEMBERS</b> DECEASED 55 CLUB CANCELLED 0 OTHER 372 <b>TOTAL 427</b>	143 CLUBS OF 300 ADDED 1 OR MORE NEW MEMBERS	<b>GENDER DISTRIBUTION</b> MALE 5,208 (66.99%) FEMALE 2,565 (32.99%) NON BINARY 1 (0.01%) PREFER NOT TO ANSWER 0 (0.00%)
	<a href="#">CLICK HERE FOR CUMULATIVE MEMBERSHIP DATA</a>	TOTAL FAMILY UNIT MEMBERS 709 FAMILY MEMBERS PAYING HALF DUES 357